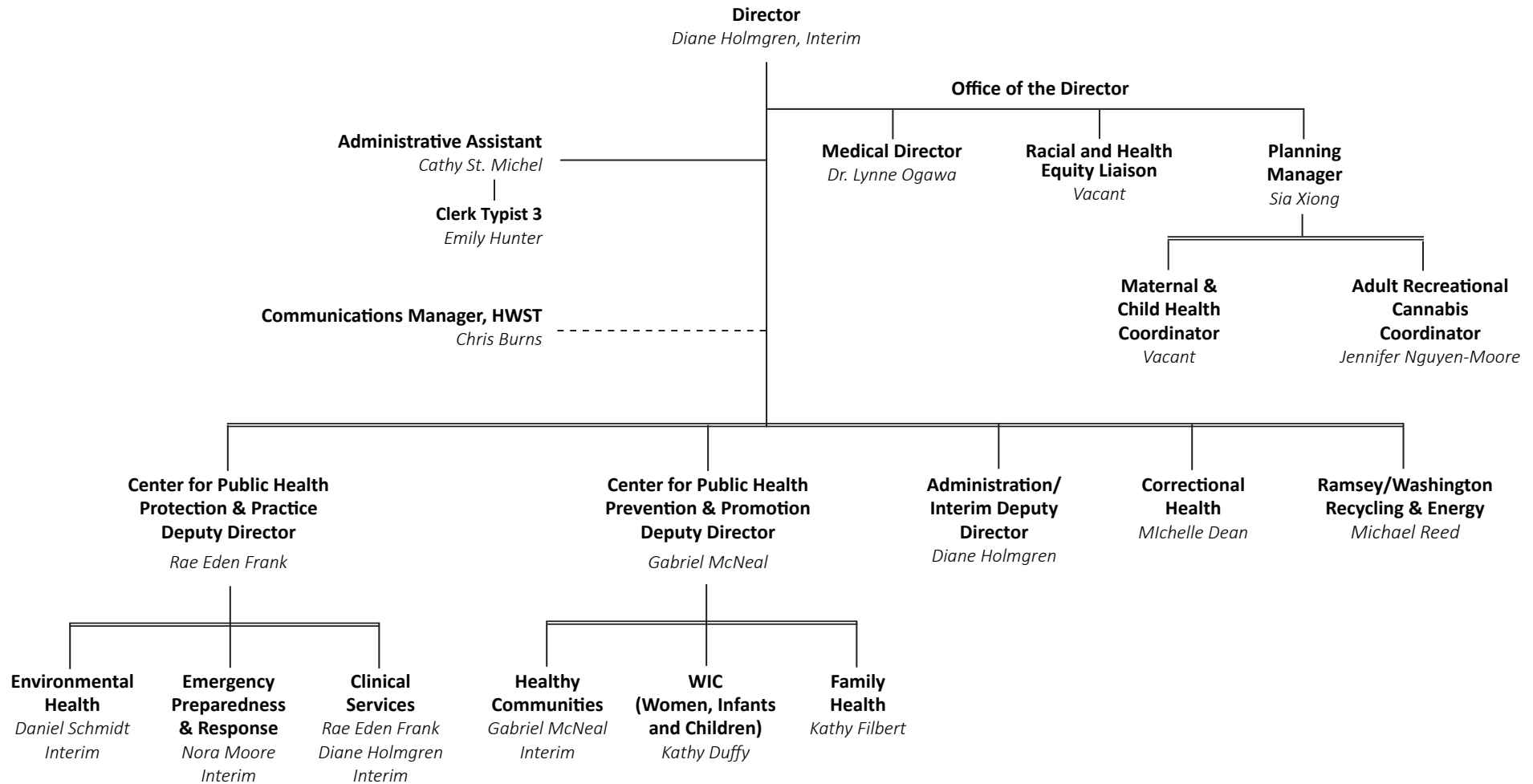


# Saint Paul - Ramsey County Public Health

H E A L T H   A N D   W E L L N E S S   S E R V I C E   T E A M



**Administration**

Budgeting, Accounting, Procurement, Contracts and Grants Management; Facility Management; Information Services Technical Support & Coordination; Health Information Systems and Privacy Compliance; Employee Health and Safety; Health Laboratory; HouseCalls; Community Health Assessment, Data Analysis, Planning and Evaluation.

**Clinical Services**

Sexual Health, Outreach/Syringe Exchange, Tuberculosis, and Immunization Services; Perinatal Hepatitis B Prevention; Refugee Screening.

**Correctional Health**

Services provided to incarcerated individuals at the Ramsey County Correctional Facility (RCCF), Juvenile Detention Center (JDC) and the Adult Detention Center (ADC).

**Environmental Health**

Environmental Health and Environmental Justice Policy Development, Evaluation and Planning; Outreach and Education on Waste Reduction, Recycling and Hazardous Waste Issues, Yard and Organics Waste Collection; Delegated MDH licensing and inspections of Food, Pool and Lodging, Radon Detection, Public Health Nuisance Control; Childhood Lead Exposure and Poisoning Prevention; Solid and Hazardous Waste Regulatory Compliance; County Energy and Sustainability Coordination; Health Impacts of Climate Change.

**Family Health**

Targeted Home Visiting Services for Pregnant and Parenting Families At-Risk, including Refugees and Immigrants, Teen Parents, and Children with Special Health Care Needs; Assessment and Case Management for Teen Parents on Minnesota Family Investment Program (MFIP); Childhood Asthma Management; Childhood Lead Poisoning Prevention; Early Intervention for children birth to five; Birth Equity Community Council (BECC), Club Mom and Club Dad.

**Health Protection**

Public Health Emergency Response Planning, Training and Recovery Capabilities; Medical Reserve Corps Management; Communicable Disease Surveillance, Investigation and Control.

**Healthy Communities**

Adolescent Health Promotion and Youth Development; Appropriate Response Initiative; Chronic Disease Prevention (Statewide Health Improvement Partnership/SHIP); Child and Teen Checkups Outreach; Community Violence Prevention; Hmong Community Health Promotion; Healthy Aging Outreach; Mental Health Wellbeing and Health Equity; Opioid Response and Prevention; SOS Sexual Violence Services.

**Ramsey/Washington Recycling & Energy (R&E)**

Ramsey/Washington Recycling & Energy Oversight and Management.

**WIC (Women, Infants and Children)**

Nutrition Assessment and Education; Basic Health Screenings; Referrals and Vouchers for supplemental nutritious foods for pregnant and breastfeeding women, women who have recently given birth, infants and children up to age five.