

2025

# HIGH VALUE NETWORK

Statewide access to quality care

Your best choice for quality care at an affordable price with a broad selection of healthcare providers. The High Value Network includes leading doctors, clinics and hospitals across Minnesota.

## TRAVEL WITH CONFIDENCE

When you travel outside the state, you have access to 1.7 million providers spanning every U.S. ZIP code through the national BlueCard<sup>®</sup> PPO network.\* In addition, Blue Cross Blue Shield Global<sup>®</sup> Core gives you access to care in 190 countries and territories worldwide.

\*The High Value Network includes providers one county into the neighboring states of Iowa, South Dakota, North Dakota and Wisconsin. When seeking care in these counties, search for providers using High Value Network (not BlueCard PPO).

To enroll in this plan, the employer must be based in Minnesota and the employee must live in the High Value Network service area.

Each healthcare provider is an independent contractor and not our agent. It is up to the member to confirm provider participation in their network prior to receiving services. Each Blue Cross and/or Blue Shield plan is an independent licensee of the Blue Cross and Blue Shield Association. Blue Cross Blue Shield Global Core is a registered mark of the Blue Cross and Blue Shield Association, an association of independent Blue Cross and/or Blue Shield plans.

## A NETWORK THAT FITS YOU



**122 HOSPITALS**  
**14,633 PRIMARY CARE PROVIDERS**  
**40,410 SPECIALTY CARE PROVIDERS**

Numbers are subject to change and are reflective of signed contracts as of January 2024.



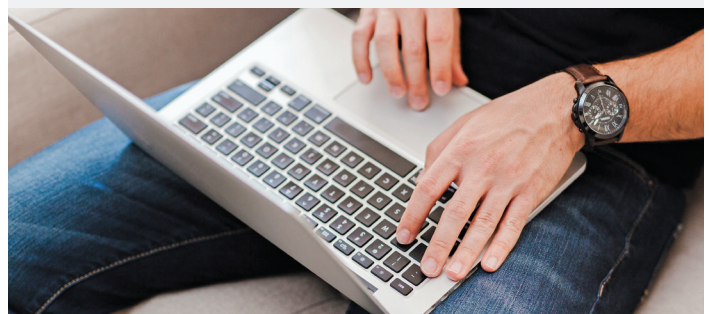
### Network matters

Be sure to stay in the network. Your out-of-pocket costs will be higher when you see an out-of-network provider.

- Log in at [bluecrossmn.com/BCA](https://bluecrossmn.com/BCA) to find providers in your specific network
- Not a member? Visit [bluecrossmn.com/FindADoctor](https://bluecrossmn.com/FindADoctor) and select the network you are considering

## QUESTIONS?

Visit [bluecrossmn.com/BCA](https://bluecrossmn.com/BCA) or call the number on the back of your member ID card



## Providers you know and trust

---

Choose from a broad selection of providers throughout Minnesota. **It's important to make sure your doctor or hospital is in the network before you receive care.**

### Metro

Allina Health  
CentraCare Health  
Children's Hospitals and Clinics  
Entira  
Hennepin County Medical Center  
M Health Fairview  
Mankato Clinic Ltd  
North Memorial Health  
Northfield Hospital and Clinic  
Ridgeview  
St. Croix Regional Medical Center  
University of Minnesota Physicians

### Central

CentraCare Health (includes Carris Health)  
Cuyuna Regional Medical Center  
Integrity Health Network  
M Health Fairview

### Northeast

Grand Itasca Clinic & Hospital  
Integrity Health Network  
M Health Fairview  
St. Luke's  
Welia Health

### Northwest/Southwest

Alomere Health  
Altru Health System  
CentraCare Benson (includes Carris Health)  
Integrity Health Network  
Lake Region Healthcare  
Lakewood Health System  
Sanford Health

### Southeast

Allina Health  
Children's Hospitals & Clinics  
Gundersen Health System  
Mankato Clinic  
Northfield Hospital & Clinics  
Olmsted Medical Center  
Winona Health

Provider listings are not all-inclusive and are subject to change.

Blue Cross® and Blue Shield® of Minnesota and Blue Plus® are nonprofit independent licensees of the Blue Cross and Blue Shield Association.

M01260R09 (8/24)