

2025

AWARE[®] NETWORK

Open access to quality care

Your best choice for easy access to the largest selection of healthcare providers across Minnesota.

With 98 percent of doctors and 100 percent of hospitals in Minnesota, this broad, open-access network makes it easy to get the care you need. Small group plans are paired with BlueAccessSM products.

TRAVEL WITH CONFIDENCE

When you travel outside the state, you have access to 1.7 million providers spanning every U.S. ZIP code through the national BlueCard[®] PPO network.* In addition, Blue Cross Blue Shield Global[®] Core gives you access to care in 190 countries and territories worldwide.

*The Aware Network includes providers one county into the neighboring states of Iowa, South Dakota, North Dakota and Wisconsin. When seeking care in these counties, search for providers using Aware Network (not BlueCard PPO).

Each healthcare provider is an independent contractor and not our agent. It is up to the member to confirm provider participation in their network prior to receiving services. Each Blue Cross and/or Blue Shield plan is an independent licensee of the Blue Cross and Blue Shield Association. Blue Cross Blue Shield Global Core is a registered mark of the Blue Cross and Blue Shield Association, an association of independent Blue Cross and/or Blue Shield plans.



Network matters

Be sure to stay in the network. Your out-of-pocket costs will be higher when you see an out-of-network provider.

- Log in at bluecrossmn.com/BCA to find providers in your specific network
- Not a member? Visit bluecrossmn.com/FindADoctor and select the network you are considering

A NETWORK THAT FITS YOU

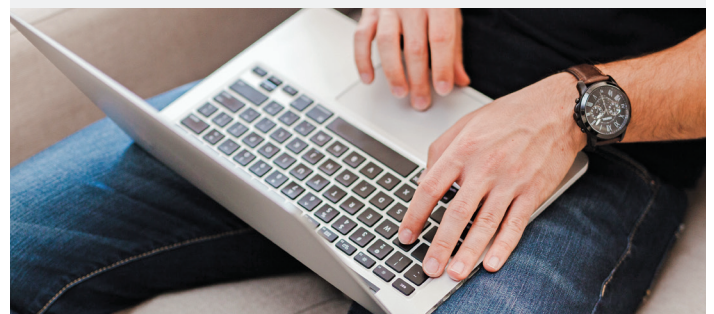


174 HOSPITALS
21,692 PRIMARY CARE PROVIDERS
51,400 SPECIALTY CARE PROVIDERS

Numbers are subject to change and are reflective of signed contracts as of January, 2024.

QUESTIONS?

Visit bluecrossmn.com/BCA or call the number on the back of your member ID card



Key in-network providers and hospitals

Choose from a broad selection of providers throughout Minnesota. **It's important to make sure your doctor or hospital is in the network before you receive care.**

Key providers

Allina Clinics
Alomere Health
Avera Clinics
Center for Diagnostic Imaging
Children's Clinics
Entira Clinics
Essentia Health Clinics
HealthPartners Clinics
M Health Fairview Clinics
Mayo Clinics
Minnesota Gastroenterology
Minnesota Oncology Hematology,
PA Associates
North Clinic
North Memorial Health Clinics
Park Nicollet Clinics
Sanford Health Clinics
St. Luke's Clinics
St. Paul Radiology/Midwest Radiology
Summit Orthopedics
Twin Cities Orthopedics
University of Minnesota Physicians
Winona Health

Key hospitals

Abbott Northwestern Hospital
Avera Hospitals
CentraCare Health (includes Carris Health)
Children's Hospitals
Essentia Health Hospitals
Hennepin County Medical Center
Lakeview Hospital
Maple Grove Hospital
Mayo Clinic Hospitals
Mercy Hospital
Park Nicollet Methodist Hospital
North Memorial Health Hospitals
Regions Hospital
Sanford Hospitals
St. Cloud Hospital
St. Francis Regional Medical Center
St. John's Hospital
St. Joseph's Hospital
St. Luke's Hospitals
United Hospital
University of Minnesota Medical Center
Woodwinds Hospital

Provider listings are not all-inclusive and are subject to change.

Blue Cross® and Blue Shield® of Minnesota and Blue Plus® are nonprofit independent licensees of the Blue Cross and Blue Shield Association.

M01458R08 (9/24)