



# POPULAR ANNUAL FINANCIAL REPORT

## A Financial Report to Citizens

YEAR ENDED DECEMBER 31, 2013



# RAMSEY COUNTY

## WORKING WITH YOU TO ENHANCE OUR QUALITY OF LIFE

### TABLE OF CONTENTS

The Year in Review	1
About Ramsey County	2
Issues & Trends	6
County Functions	9
Financial Statements	18

### 2013 GOALS

- Be a leader in financial and operational management
- Promote multi-modal transit and transportation solutions that effectively serve our citizens
- Prevent crime and improve public safety
- Be a leader in responding to the changing demographics in Ramsey County
- Improve the quality of life within Ramsey County
- Protect our natural resources and the quality of our environment
- Cultivate economic prosperity and combat concentrated areas of financial poverty



### 2013 RAMSEY COUNTY BOARD OF COMMISSIONERS

Top Row, Left to Right:  
Blake Huffman (1st District);  
Jim McDonough (6th District);  
Mary Jo McGuire (2nd District);  
Toni Carter (4th District)

Bottom Row, Left to Right:  
Janice Rettman (3rd District);  
Chair Rafael Ortega (5th District);  
Victoria Reinhardt (7th District)

# THE YEAR IN REVIEW

**W**elcome to the Popular Annual Financial Report (PAFR) for Ramsey County. Our 2013 PAFR provides a general overview of the County's financial position in 2013 and highlights our important initiatives from throughout the year.

This PAFR provides an easy-to-read summary of the County's Comprehensive Annual Financial Report (CAFR) that contains more detailed information on financial statements, schedules, statistics and notes for the year. We welcome you to read the CAFR on the County's website at [www.co.ramsey.mn.us](http://www.co.ramsey.mn.us). While there, we encourage you to browse the rest of the website to learn about all the ways the County serves its citizens, including special events and public notices.

The County responds to changing community needs by listening to its residents and delivering innovative and collaborative programs. Throughout the next several pages, you will have an opportunity to see how Ramsey County performed financially in 2013, as well as to understand the on-going services that are provided to the public.

As in previous years, Ramsey County continues to be financially sound and well-managed by a dedicated County Board and professional staff.

Thank you for your interest in Ramsey County and its Popular Annual Financial Report. We hope this document is informative and interesting.

Comments, questions and suggestions can be addressed to the Ramsey County Finance Department, Suite 270, 15 West Kellogg Boulevard, Saint Paul, MN 55102.



*Julie Kleinschmidt*  
Julie Kleinschmidt  
Ramsey County Manager



*Lee Mehrkens*  
Lee Mehrkens  
Chief Financial Officer

# ABOUT RAMSEY COUNTY



## Population

Ramsey County is a fully developed urban center that has the second largest county population in Minnesota and the smallest land area. With its population of 514,696 it is the most fully developed and densely populated county in Minnesota. Saint Paul is the central city and has about 56% of the residents. The suburban area includes communities that range in size from Gem Lake (500 people) to Maplewood (40,000 people).

The County has a diverse community. The largest minority populations are Asians (12%) and African American (11%). About 7.2% of the people have a Hispanic or Latino ethnic background. Of people ages 5 years and older, 21.6% live in homes where a language other than English is spoken.

## Income

Income in Ramsey County is slightly below the U.S. median. The Census Bureau estimated the 2011 median household income was \$51,702 compared with the U.S. median of \$50,502. About 17.5% of families were below the poverty level; nationally 15.9% of families were below poverty.

## Education

Ramsey County has a well-educated population. Of people 25 and over, 14.4% have a graduate or professional degree; the U.S. rate is 10.6%. About 38.0% have a bachelors or higher degree in Ramsey County; 89.0% have completed high school. The national rates are 28.5% and 85.9% respectively. In addition, we are home to more colleges and universities than any other county within Minnesota.

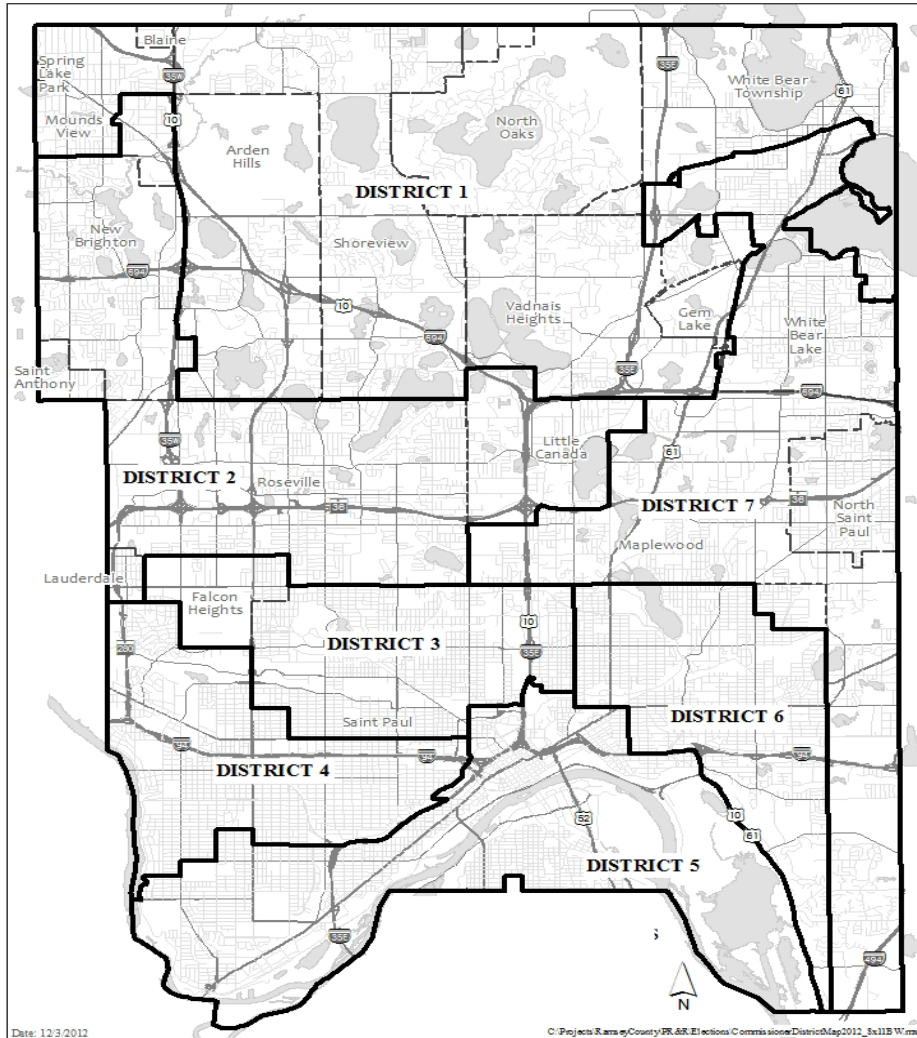
## Jobs

Ramsey County is a major employment center that draws people from surrounding counties to fill the need for employees. There were 317,575 people employed in Ramsey County in 2012. This is more than the number of Ramsey County residents in the labor force (274,598). Ramsey County is home to many of Minnesota's largest employers including 3M Company, U.S. Bancorp, Health East, and United/Children's Hospital. Ramsey County's unemployment rate is consistently below national and state rates. In 2012 the average unemployment rate within the county was 5.8 percent.

## County Government

Ramsey County was organized on October 27, 1849 and named for Alexander Ramsey, Minnesota's first Territorial Governor. A seven-member Board of Commissioners elected by district for staggered four-year terms governs the County. The County Attorney, Sheriff, and District Court Judges are also elected officials. The Commissioners are responsible for establishing strategic direction for the County, creating policies and adopting a biennial budget. The County Manager is responsible for carrying out the policies of the Board of Commissioners, overseeing the day-to-day operations of the County, and appointing department directors. In 1990, Ramsey County citizens voted to become the first and only Home Rule Charter County in Minnesota. Adopted in 1992, the Charter authorizes more autonomy to the County for local governance.

# RAMSEY COUNTY COMMISSIONER DISTRICTS



- District 1** Arden Hills, Gem Lake, Mounds View, North Oaks, Shoreview, Vadnais Heights, and White Bear Township
- District 2** Lauderdale, Little Canada, Mounds View (Precinct 4), New Brighton, Roseville, and St. Anthony
- District 3** St Paul Neighborhoods in District 5, North End/South Como (District 6), Como Park, Frogtown (District 7), Summit-University, and Hamline-Midway.
- District 4** Crocus Hill, Desnoyer Park, Hamline-Midway (Part), Highland Park (Part), Lexington-Hamline, Macalester-Groveland (Part), Merriam Park, Snelling-Hamline, Summit Hill, St. Anthony Park and Summit-University
- District 5** Macalester-Groveland (Precincts 3-8 and 3-14), Highland Park, West 7th, Capitol Heights, Downtown, The West Side, Railroad Island, Dayton's Bluff and Mounds Blvd (East Side)
- District 6** Dayton's Bluff, East Side, Hayden Heights, Hazel Park, Payne-Phalen, and Sunray-Battle Creek
- District 7** Maplewood, North St. Paul, the City of White Bear Lake, and the Hillcrest area of St. Paul (Ward 6 Precinct 12).

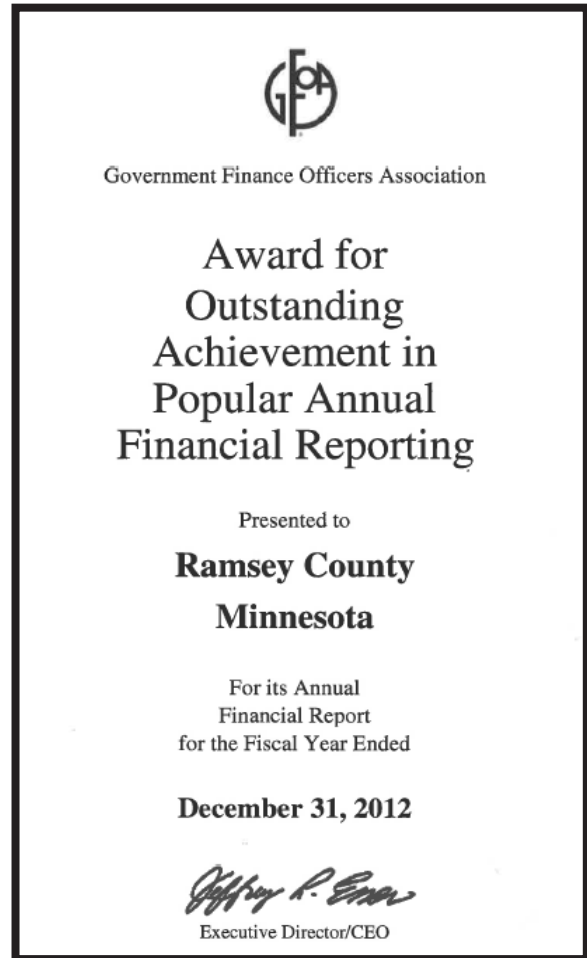
# AWARDS & RECOGNITION

## 2012 GFOA AWARD

The Government Finance Officers Association of the United States and Canada (GFOA) has given an Award for Outstanding Achievement in Popular Annual Financial Reporting to Ramsey County for its Popular Annual Financial Report for the fiscal year ended December 31, 2012. The Award for Outstanding Achievement in Popular Annual Financial Reporting is a prestigious national award recognizing conformance with the highest standards for preparation of state and local government popular reports.

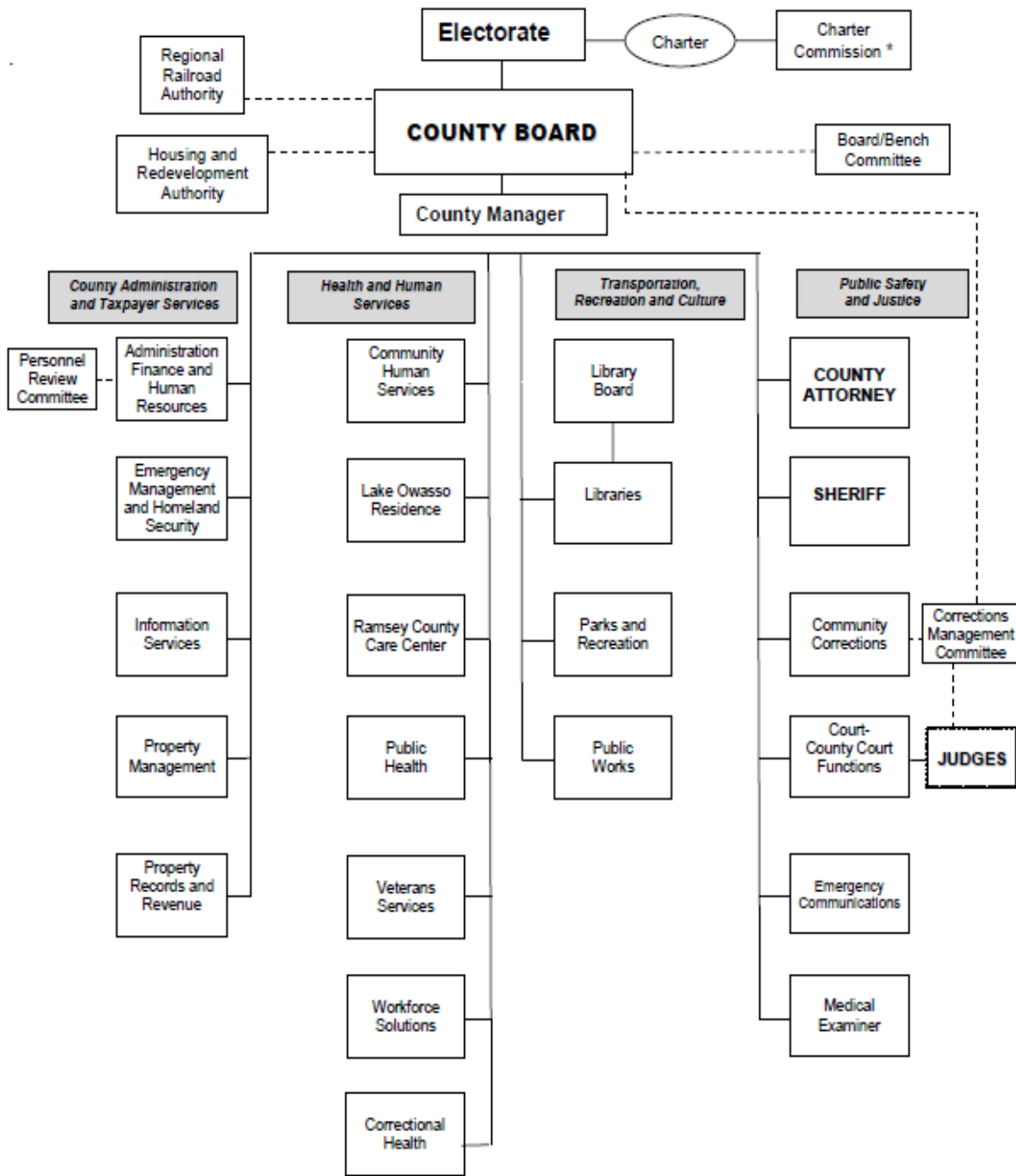
In order to receive an Award for Outstanding Achievement in Popular Annual Financial Reporting, a government unit must publish a Popular Annual Financial Report, whose contents conform to program standards of creativity, presentation, understandability and reader appeal.

An Award for Outstanding Achievement in Popular Annual Financial Reporting is valid for a period of one year only. We believe our current report continues to conform to the Popular Annual Financial Reporting requirements, and we are submitting it to GFOA.



- **Distinguished Budget Presentation Award** from the Government Finance Officer's Association (received continuously since 1983).
- **Certificate of Achievement in Excellence in Financial Reporting** from the Government Finance Officer's Association (received continuously since 1975)
- **GFOA Award for Outstanding Achievement in Popular Annual Financial Reporting** (received continuously since 2009).
- **AAA Bond Rating.** Ramsey County is one of only 53 counties nationwide (of 3,069 total U.S. counties) and five counties in Minnesota to receive a AAA/Aaa credit rating, the highest possible credit rating from both Moody's and Standard & Poor's rating agencies (in the top 1.7% of counties).
- Ramsey is the **only County in Minnesota** to earn the GFOA's annual awards for excellence in the CAFR, PAFR, and Distinguished Budget Presentation along with having a top bond rating by both rating agencies.

# RAMSEY COUNTY ORGANIZATIONAL CHART



**LEGEND**

- \* Appointed by District Court
- BOLD** Elected Officials
- Policy Relationship
- Minnesota State Agency



## OPPORTUNITY FOR ALL

**H**ome to the Capitol City of Minnesota, Saint Paul, Ramsey County has a long history of being at the center of economic growth for the Twin Cities region. Ramsey County is the second most populous county and the smallest in land mass, which speaks to its high residential density and urbanization.

As a whole, the Twin Cities region ranks highly on many quality of life indicators. However, beneath this collective picture, many residents are not faring as well as the rest of the region, with glaring disparities falling along racial lines. One of many examples: the Twin Cities had the nation's second highest employment disparities between African American and White residents.

In January 2013, the County Board adopted a new goal to **foster economic prosperity and eliminate concentrated poverty**. This goal led to data-driven analysis, which revealed some startling facts that set Ramsey County apart from the rest of the Twin Cities region. Ramsey County:

- is the most racially diverse
- is one of two major employment centers with 317,575 jobs – the highest density per square mile
- has a lower number of adults with high school diplomas, and lower 8th grade math and 3rd grade reading scores
- has the highest proportion of census tracts with more than 40% of the residents living below the poverty line
- has the highest proportion of affordable housing by a significant margin.

These facts highlight both strengths and challenges facing the County in addressing these priorities:

***Our people are our future:*** Our diversity is a strength, but racial disparities undermine county-wide economic prosperity. Investments in education and transit options for our current and future workforce need to be strengthened for *all* of our residents to connect to strong job opportunities.

***Build on the existing foundation and maximize land use:*** With the smallest land mass and the least undeveloped acreage, increasing density and productivity of land use is critical to expanding employment opportunities and tax base. Creating and sustaining mixed-income communities, which include a balanced mix of commercial industrial activities and other land uses, will maintain affordable options while attracting investments in all of our neighborhoods.

***New partnerships can drive change:*** Fostering a shared vision and alignment of efforts between the county, cities and other stakeholders can create more equitable prosperity across the county and the region. Partnering with neighborhoods experiencing concentrated poverty can lead to collective solutions and strengthening access to opportunity.

### The Web of Opportunity



*"Life is lived in a web of opportunity. Only if we address all of the mutually reinforcing constraints on opportunity can we expect to make real progress."*

-Dr. John Powell, Chair of Civil Rights & Civil Liberties Moritz College of Law, Ohio State University

In the fall of 2013, the county began sharing this data and holding conversations with other stakeholders to develop a shared understanding of where committed action can create meaningful change. The important work has only begun, but it is in this work that greater opportunities for all will be real.

### SAFE HARBOR LAW

Over the past several years, Ramsey County has taken a leading role in Minnesota – and even nationwide – in combating a previously hidden but major problem: the sex trafficking of our children.

In early 2011, our County Attorney, John Choi, convened his fellow County Attorneys across the region to publicly state that they would no longer prosecute child victims of trafficking. This change in prosecution policy served as an impetus for an important change in state law. Under the State Safe Harbor for Sexually Exploited Youth Act of 2011 – effective August 1, 2014 – young people who are sexually exploited are treated as victims, not perpetrators.

Implementing the Safe Harbor Law will require more than a simple change in prosecution policy. Victims of sex trafficking often have complicated and substantial needs – for mental health care, emergency and long-term shelter, counseling, treatment for drug addiction, and much more. Even identifying victims in the first place can be quite difficult. Traffickers and those who buy victims need to be held accountable. All of this requires close collaboration among social service and health care providers, the courts, corrections, prosecutors, law enforcement and many others.

Ramsey County departments are stepping up to meet these challenges. Human Services, Public Health, the County Attorney’s Office, and the Sheriff’s Office are all participating in efforts to revise and improve protocols in the county – both within county government and with outside agencies. Public Health, for example, has taken the lead on reviewing the practices of medical facilities that encounter trafficking victims. Under the leadership of our Sheriff, Matt Bostrom, Ramsey County deputies have been convening a countywide law enforcement team to collaborate on sex trafficking cases, which often cross jurisdictional lines. Human Services has been meeting with County Attorney staff to determine how they will work together to identify and protect children in light of the new law changes.

The Ramsey County anti-trafficking work most apparent to the public is perhaps the series of prosecutions conducted by the County Attorney’s Office (RCAO). The five longest sentences for sex trafficking in state history were achieved in the second half of 2013 from cases charged by the RCAO. These sentences, ranging from 21 to 40 years, demonstrate the County’s commitment to holding accountable the real perpetrators in sex trafficking – those who buy and profit from our children.



### SAFE HARBOR LAW

**T**his commitment was the impetus for the RCAO's work with a statewide coalition to strengthen awareness, advance legislation, and develop a comprehensive, systemic response to better: identify victims and opportunities to intervene; treat victims with a victim-centered approach; and investigate and prosecute these cases to hold traffickers accountable.

As part of that collaborative effort, the RCAO received a legislative appropriation to help build the statewide infrastructure to implement Safe Harbor. Under this appropriation, the RCAO will bring people together to develop model protocol and train law enforcement and prosecutors throughout the state on best practices with respect to identifying and intervening with sexually-exploited/trafficked youth.

This work by county departments parallels efforts at the level of county leadership. The Ramsey County Board passed a resolution calling on Backpage.com to end its complicity in the selling of our children for sex and Commissioners McDonough and Ortega brought a similar resolution to the Association of Minnesota Counties (AMC), which passed unanimously. (Ramsey County Commissioners Toni Carter and Jim McDonough serve as current and past AMC chairs, respectively.) In April 2014, AMC and the RCAO joined forces to host a conference to kick off statewide Safe Harbor efforts, at which many Ramsey County leaders and staff were engaged in the dialogue.

Through a two-pronged approach of improving prevention and identification, along with a statewide model protocol that encompasses a victim-centered, comprehensive, systemic response, our community can come together to effectively combat the sex trafficking of our children.



**Sexual Violence  
Can Happen to Anyone  
SOS Sexual Violence Services  
Can HELP**

*Have you or someone you know  
been hurt by sexual violence?*

*Do you need someone to talk to?*

*Are you looking for resources or help?*

**SOS Provides:**

- 24-hour crisis services
- Assistance with medical care and legal issues
- one-on-one short term counseling
- Support groups
- Community resources and referrals
- Community education

**Call for help 651-266-1000**

or for more information

Log on to [www.co/ramsey.mn.us/ph](http://www.co/ramsey.mn.us/ph)

# PUBLIC SAFETY & JUSTICE SERVICES



Public Safety and Justice are primary concerns for Ramsey County. Community services are provided by the Sheriff's Department, County Attorney's Office, District Court, Emergency Communications, Medical Examiner, and Community Corrections.

## Sheriff's Office

The Ramsey County Sheriff's Office provides law enforcement and public service in accordance with our constitutional and statutory mandates. The Sheriff's Office is committed to leadership in public safety, through professionalism and partnership with other agencies.

### Sheriff's Office 2013 Highlights:

- The Patrol Unit responded to 25,684 calls for service in the seven contract communities
- The General Investigations Unit investigated 805 cases and provided forensic services for 736 county-wide cases
- The Apprehension Unit pursued and arrested over 360 wanted fugitives
- The Violent Crimes Enforcement Team seized over 400 pounds of narcotics
- The Public Information Office published over 60 press releases, advisories, and community updates
- The Adult Detention Center safely housed 20,226 inmates
- The Court Security Unit provided security to 109,672 of the county's court hearings
- Managed a 160% increase in gun permit

- applications without an increase in staff
- Formed a regional crime scene response team and strengthened the County's partnership with the Bureau of Criminal Apprehension
- Upgraded monitoring and camera systems within the Jail and transitioned to a new inmate telephone system
- Expanded payment options for citizens by accepting credit cards for Criminal History and Gen Permit services

## Community Corrections

Community Corrections staff carries out the decisions of the court system and implement conditions of probation and treatment plans for juveniles and adults. The department also operates three institutions that detain juveniles and adults after conviction.

### Community Corrections in 2013:

- Provided probation services to 20,406 adults and 1,140 juveniles
- Data released by the State regarding recidivism in the metro area reflects that 86% of all felon adult offenders remained felony-free three years after discharge from supervision



*Connecting with youth is an essential part of building relationships between law enforcement and the community.*

# PUBLIC SAFETY & JUSTICE SERVICES

## County Attorney's Office

The County Attorney prosecutes adult and juvenile offenders who have committed crimes in Ramsey County and collects child support. The County Attorney also provides legal advice and counsel and represents county agencies in legal matters.

### In 2013, the County Attorney's Office:

- Increased the percentage of domestic abuse cases reviewed by the office that are referred to Court with a criminal complaint from 56% in 2011 to 70% in 2013, while maintaining a high conviction rate
- Maintained the average time to charge domestic abuse cases to 1 day
- Assisted more than 13,000 families who shared in child support collections of \$52.4 million

## Emergency Communications

Emergency Communications answers 9-1-1 and provides multi-agency dispatching services for law enforcement, fire, and emergency medical responders.

### 2013 Statistics and Highlights:

- Handled over one million telephone calls including arriving 9-1-1 calls (32%), non-emergency calls (43%), and outbound calls (25%).
- Averaged answer time of 4.3 seconds
- Provided technical support for over 4,000 mobile and portable 800 MHz radio users
- Dispatched or monitored over 425,000 calls for public safety services of 18 law and fire agencies in the County

## Medical Examiner

The Ramsey County Medical Examiner investigates deaths to provide a truthful and unbiased account to Ramsey County residents, law enforcement, and the judicial system. The investigative staff responds to death scenes 24 hours a day.

### In 2013, the Medical Examiner's Office:

- The Investigative staff became ABMDI Certified (American Board of Medicolegal Death Investigators)
- Staff participated in many training events for mass fatality preparedness
- Played a critical role in helping grieving families with Life Source donation. Working together we had 31 donors resulting in 119 organ transplants/lives saved

## Court System

The Second Judicial District Court (Ramsey County) is a unified trial court with general jurisdiction to hear all types of civil and criminal cases. The Court has a total of 29 judges, five referees, and one magistrate. Judges can hear any criminal or civil matter brought before them. Cases are assigned to various court calendars as determined by the Chief Judge. The Chief Judge also assigns judges and referees.

The main Courthouse is located in downtown St. Paul. The Second Judicial District is legislatively mandated to maintain a suburban court site, which is located in the City of Maplewood. Courtroom space is also provided at the County's Law Enforcement Center, at the County's Juvenile and Family Justice Center, and at the County's Mental Health Court Facility.

# Emergency Call 9-1-1

# TRANSPORTATION, RECREATION & CULTURAL SERVICES

Ramsey County offers a wealth of recreation opportunities for residents and visitors alike. The County boasts parks, trails, lakes, beaches, golf courses and indoor ice arenas among its many options that enhance the quality of life for the people of Ramsey County.

Also included in this function are the departments of Public Works, which maintains the roadways within the borders of Ramsey County, and seven Ramsey County Libraries.

## Parks & Recreation

### Green Spaces, Fun Places, Active Lives

Ramsey County maintains more than 6,500 acres of parks, trails, open space and recreation areas for its residents and serves over five million visitors annually.

Each park and trail corridor has unique charm and includes facilities for one or more of the following: hiking, biking, cross-country skiing, picnicking, children's play, nature study, swimming, boating, fishing, sledding, archery and off-leash dog activity.

The County's 10 indoor ice arenas provide opportunities for year-round ice skating, and five golf courses offer golfers of all skill levels opportunities to learn and polish their game in fun, picturesque environments. Tamarack nature center provides a rich environment for visitors of all ages to relax, learn and explore nature without having to travel far from the metro area.

Residents from throughout Ramsey County and the region use these facilities and enjoy the convenience of nearby areas that bring nature, recreation and enjoyment into their lives.



*Young visitors to Battle Creek Waterworks enjoy the sand play area on a summer day.*

## Ramsey County Parks and Recreation:

- In 2013, the County completed an extensive renovation of historic Keller Golf Course, including the construction of new clubhouse and pro shop buildings and the installation of new greens, tees, bunkers, drainage and cart paths.
- Is one of 10 Implementing Agencies for the Metropolitan Regional Park System and receives Regional and State Grants to acquire, develop, restore, operate and maintain its regional parks and trails
- Maintains 9 County parks, 6 regional parks, 6 regional trails and 9 County open space sites
- Nearly 100,000 visitors utilized Tamarack Nature Center in 2013, including more than 37,000 visitors to the Discovery Hollow Nature Play Area
- Manages Special Recreation Facilities within parks including: Battle Creek Waterworks Family Aquatic Center, Tamarack Nature Center Discovery Hollow, 2 archery ranges and 4 off-leash dog areas
- Coordinates the Active Living Ramsey Communities initiative, which works with local municipalities, businesses and community partners to promote healthy lifestyles and environments that make it safe and convenient for people to integrate physical activity into their daily routines

# TRANSPORTATION, RECREATION & CULTURAL SERVICES



*Ramsey County Library Programs  
are Out Of This World*

## Ramsey County Library

With seven libraries, Ramsey County provides a wide variety of services to its residents including literacy and technology workshops, library materials, and digital access to information. To address increasing demand for materials, the Libraries are investing heavily in automation and are using building improvements to improve workflow.

### In 2013, Ramsey County Library:

- Circulated almost 4.6 million items, including a growing e-book collection
- Hosted almost 2 million Web visits, provided over 322,000 hours of public computer time and served over 250,000 wireless network sessions
- Provided literacy programs serving over 60,500 kids and their families and out-of-school programming serving more than 10,000 teens
- Offered more than 440 technology classes for more than 3,000 students including one-to-one labs for computer and e-reader help

## Public Works

The Ramsey County Public Works Department operates and maintains approximately 293 miles of roadway (271 miles of County State Aid Highways and 22 miles of County Roads). and 94 bridges. Over 250 traffic signals control movements at intersections and over 30,000 signs and pavement markings regulate traffic and provide drivers with information. Thousands of drainage structures and miles of pipe drain storm water from the roads. During the winter months, County crews clear the roads of snow and apply, on average, about 6,000 tons of salt each winter to keep the roads clear of ice.

The Public Works Department also works with the cities to annually develop a five-year Transportation Improvement Program (TIP) of construction projects to maintain and modernize the road system. This program includes roads, bridges, traffic signals, and pedestrian and bike improvements designed to provide the best service possible to the broad range of needs of County Residents. The TIP also identifies the County's maintenance projects each year to identify and correct pavement deficiencies.



*The Ramsey County Public Works Department  
maintains approximately 293 miles of roadway*



*County residents have access to thousands of e-books  
& e-audiobooks through the 3M Cloud Library,  
OneClickdigital and OverDrive*

# HEALTH & HUMAN SERVICES

The Ramsey County Health and Human Services function serves to meet basic human needs by providing protection and assisting clients in achieving self-sufficiency. Departments in this function are responsible for providing financial, mental health, social, and job training services to a variety of groups including low income, elderly, disabled, homeless, mentally ill, abused, and vulnerable children and adults.

## Community Human Services (CHS)

CHS receives a combination of federal, state, and local funds to administer and deliver services to children and families, low-income and homeless, elderly and physically disabled, chemically dependent, mentally ill, and developmentally disabled residents. On any given day in 2013, CHS had over 128,000 clients/service consumers.

CHS's mission is "Making a Difference: Helping People Survive and Thrive" by providing resources to meet basic needs, assuring protection for the vulnerable, and assisting self-sufficiency, all in the most cost effective manner possible

### In 2013, Community Human Services:

- Took 57,890 applications for clients applying for financial and medical assistance, and food support
- Took 1,408 intake reports of child maltreatment
- Finalized 89 adoptions
- Provided case management services to approximately 6,127 adults and children with disabilities



*Ramsey County offers 7 Yard Waste Collection Sites including locations in Arden Hills, Battle Creek, Frank & Sims, Midway, Mounds View, Summit Hill and White Bear Township. Sites are open seasonally April 7 - November 30, 2014. For more information visit: [www.co.ramsey.mn.us/ph](http://www.co.ramsey.mn.us/ph)*

## Workforce Solutions

Workforce Solutions' mission is to strengthen the economic success of our community through personalized and effective workforce development. Workforce Solutions does this by providing employment counseling and training opportunities to job seekers, and various support services to employers.

### In 2013, Workforce Solutions:

- Helped over 14,530 job seekers search for employment
- Placed 454 laid off workers in new employment.

## The St. Paul-Ramsey County Department of Public Health

Saint Paul – Ramsey County Public Health's mission is to protect and improve the health of people and the environment in Ramsey County. The department carries out federal and state mandates to prevent the spread of disease, protect against environmental hazards, prevent injuries, promote healthy behavior, respond to health emergencies, and assure accessibility of health services.

### Public Health services provided in 2013 include:

- Provided 6,870 immunizations.
- Helped 30,474 low-income mothers, infants, and young children get supplemental nutritious foods and information on health, nutrition, and breastfeeding.
- Provided over 21,000 visits to primary caregivers, prenatal clients, infants and children.
- Received 141,084 cubic yards of leaves, grass and garden wastes and over 142,900 cubic yards of tree and shrub waste
- Expanded work with Saint Paul Public Housing, promoting healthy foods and physical activity to all 16 agency sites, affecting up to 10,000 residents



## Ramsey County Care Center

The Ramsey County Care Center has been serving the community since 1854 and is built on a commitment to serving residents and their families. Here, elderly citizens are provided the necessary care and services to live healthy, dignified, full lives. The Care Center is committed to quality improvement programs that enhance the quality of life and quality of care of our residents.

Ramsey County Care Center's 26 bed Transitional Care Unit combines the advantages of rehabilitation and long-term care with the services of an acute care hospital. The goal is for each patient to achieve the highest level of independence through individualized treatment plans.

### Ramsey County Care Center Features:

- A beautiful courtyard with walking paths, gazebos, gardens, and wheel chair accessible glider
- Spacious private and double rooms
- A private 2-room suite with sofa sleeper
- Therapy up to six days a week
- Telephone and cable in each room
- Laundry service
- Wi-Fi Internet access



A Care Center resident enjoying the Holidays with friends & family

## Lake Owasso Residence

Lake Owasso Residence provides licensed residential services to 64 adults with moderate to severe developmental disabilities and complex medical and social needs. Residents live in safe and nurturing environments that address individual needs and improve their quality of life.

The highest priority of Lake Owasso Residence is to provide residents with excellent programming and supportive medical services to improve their functional abilities and independent living skills

## Veterans Services

Ramsey County Veterans Services (RCVSO) provides guidance, assistance and advocacy to the veterans and active military service members of Ramsey County, their dependents and survivors who seek to understand and access benefits available from the Veterans Administration (VA), Minnesota Department of Veterans Affairs (MDVA) and community partners who offer programs and services to veterans. Veterans Services work directly with veterans to complete forms, gather required documentation, submit claims and applications and explain correspondence and decisions. Demographic trends and the military draw down of troops around the world continue to drive demand for the services of RCVSO. We have made it our business to cultivate and nurture great working relationships with our biggest partners, VA and MDVA, our internal partners Ramsey County Public Health and Human Services and our community partners such as the Minnesota Assistance Council for Veterans (MACV). In 2013 Ramsey County Veterans Services joined forces with the Ramsey County Attorney's office to implement the Ramsey County Veterans Court. We can be reached at 651-266-2545 and our offices are located at 90 W. Plato Blvd Suite 210, St Paul, MN 55107.

# TAXPAYER SERVICES & COUNTY ADMINISTRATION

The Taxpayer Services and County Administration function covers a wide range of vital County services. This function includes the Ramsey County Board of Commissioners, County Manager's Office, Property Management, Information Services, as well as Property Records, Revenue, and Elections. Information Services maintains the County's technical infrastructure. Property Management is charged with maintaining the buildings and grounds that are owned by Ramsey County. Property Records, Revenue, and Elections handles real estate documents and appraisals.

## County Board & Administration

This functional area includes operations and funding for the County Board and County Manager's Office, including Human Resources, Finance, and Emergency Management.

### In 2013, Ramsey County:

- Approved the 2014-2015 Biennial budget with a zero % property tax levy increase for both 2014 and 2015
- Issued debt to provide funding for:
  - Continued clean up of Twin Cities Army Ammunition Plant.
  - Construction of a juvenile detention facility
  - Installation of a fiber optics network
  - Implementation of a Computer aided dispatch/mobile system

*Ramsey County has begun clean up and redevelopment of the former Twin Cities Army Ammunition Plant (TCAAP) located in Arden Hills*

## Property Management

The Property Management Department provides facility and project management services for County owned and leased buildings. The Department manages over 2.2 million net rentable square feet in 21 major County owned buildings.

### In 2013, Property Management:

- Assumed the facility management and asset preservation functions for the Ramsey County Medical Examiner Facility and Ramsey County Correctional Facility, effective January 2013
- Continued to provide quality building services while maintaining an operating cost per net rentable square foot of \$6.76 for their buildings
- Implemented a utility management software package in the Roseville Library to track County utility consumption, compare the energy efficiencies of facilities and identify where corrective measures need to be implemented
- Continued installation of utility submeters in County owned buildings to monitor utility consumption on a real time basis. This allows us to have visibility into the energy use and performance of our equipment, creating opportunities for energy and capital expenditure savings



## Property Records and Revenue and Elections

Property Records and Revenue is responsible for the oversight of activities involved in recording property ownership, valuing property in the County, and collecting and distributing property taxes. The Department is also responsible for facilitation of state, local, and national elections, and passports.

The Elections Office continued its growth in 2013 by negotiating contracts with the City of Vadnais Heights and the White Bear Lake Area School District for the administration of their elections. As of the start of the 2014 election year, the Elections Office will be directly responsible for administration of all election-related duties for nine municipalities and four school districts in the County, representing 74% of the County's voters.

In 2013, the Examiner of Titles Office issued 954 Directives and Certificates of Examiner, reported on 652 title defect cases, and conducted 966 hearings.

The Recorder's Office recorded, indexed, and returned to customers more than 106,000 real estate documents.

Property Tax Services had over a million communications with customers via mail, the phone, e-mail, and the web. It also maintains current and historical information on property values, taxes, and services on its website at [www.co.ramsey.mn.us/prr](http://www.co.ramsey.mn.us/prr).

The Assessor's Office completed 31,877 property reappraisals and 1,177 review appraisals.

*A rainwater garden is a garden bed whose purpose is to capture rainfall before it travels very far. It allows the rainwater to soak into the ground instead of washing soil and pollutants into our storm sewers. For more information about groundwater protection, check out the Ramsey Conservation District's Homepage on <http://www.co.ramsey.mn.us>.*

## Information Services

Information Services develops and maintains the County's technology infrastructure and establishes enterprise standards and policies to promote a strong, efficient and secure IT environment. The Department provides County-wide technology procurement oversight and direct technical support to a majority of Ramsey County Departments. Services offered include project management, records management, and application and web development and support. The Department also manages the County's electronic document management and geographic information systems.

### In 2013, Information Services:

- Provided voice technology services to more than 6,750 County, City of St. Paul, and Minnesota Second Judicial District Court users
- Averaged over 176,500 monthly visits, including over 88,500 unique monthly visitors, to the County's website
- Responded to nearly 6,500 Help Desk requests from Ramsey County employees

## Other Funding Areas

In addition to the various departments listed in this report, the County provides funding to the Ramsey Conservation District, Ramsey County Historical Society, the Ramsey County Landmark Center, and the County Extension Service.



# REGIONAL RAILROAD AUTHORITY

**T**he Ramsey County Regional Railroad Authority (RCRRA) was formed in 1987 for the purpose of planning and providing transit services in Ramsey County. RCRRA is a political subdivision of Minnesota governed by the seven Ramsey County commissioners.

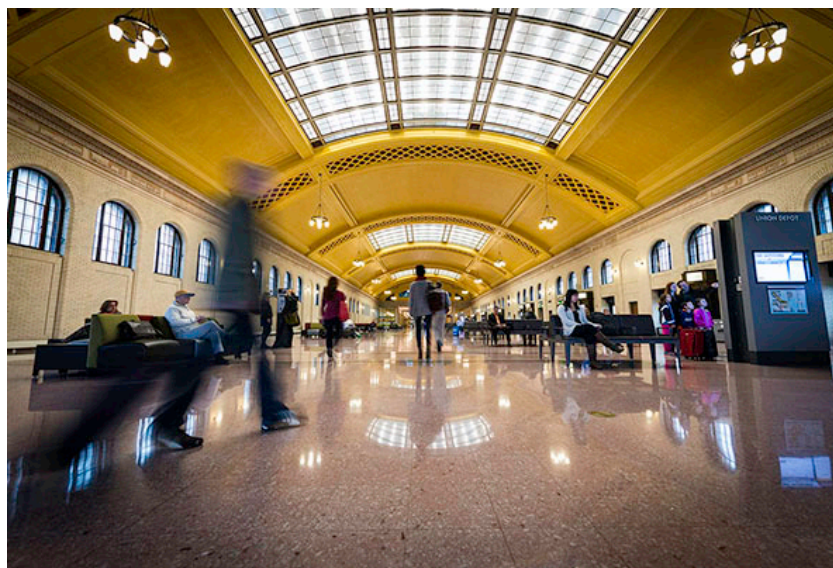
RCRRA acquired the BNSF property from Maplewood from County Road D north to Buerkle Road in planning for the Rush Line Corridor. At Union Depot in Saint Paul, the Railfan picnic area was constructed and opened to the public in the fall. Additionally, the east parking lot was completed during the fall.

Recognizing the importance of transit for mobility and economic development, RCRRA plans, educates, coordinates, implements and funds transit options within Ramsey County. Regional Railroad Authority leadership and employees are active participants in planning and developing other transit corridors that will serve the region.

The Ramsey County Regional Railroad Authority participated in the Red Rock Corridor Commission, the Rush Line Corridor Task Force, Minnesota High Speed Rail Coalition, Robert Street Steering Committee, Gateway Corridor Commission, Central Corridor Partnership and the Counties Transit Improvement Board.

The Red Rock Alternatives Analysis Update (AAU) Study work began in 2013. The Red Rock AAU will be completed in 2014. The Rush Line Pre-Project Development Study RFP was released in September. The Rush Line award was made in December with work expected to commence in earnest in early 2014. The Robert Street Alternatives Analysis Study which began in 2012 was in full swing in 2013. The technical recommendations will be available in 2014. The Gateway Corridor Draft Environmental Impact Statement was initiated in March 2013 with work in the Gateway Corridor set to move into an intensive public scoping period in 2014.

For more information on Ramsey County Regional Railroad Authority, visit their website at [www.co.ramsey.mn.us/rail](http://www.co.ramsey.mn.us/rail).



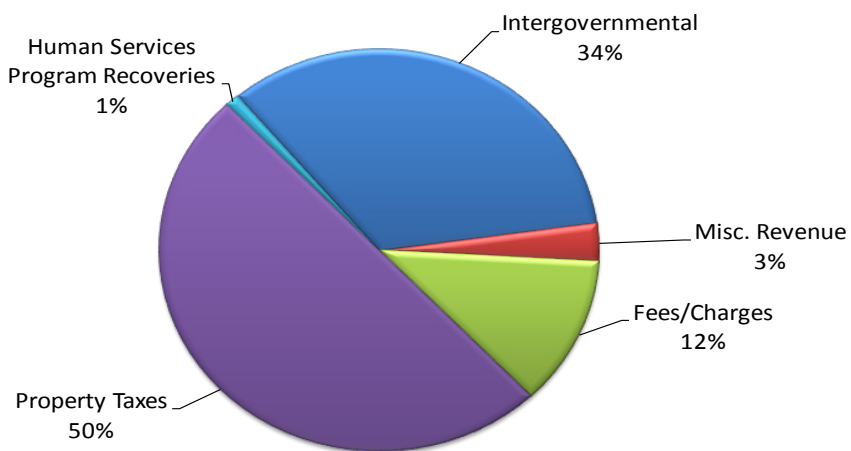
*Travelers awaiting transit in Union Depot's beautiful waiting room.  
Photo credit: Ramsey County Regional Railroad Authority/Union Depot*

# FUND FINANCIAL STATEMENTS

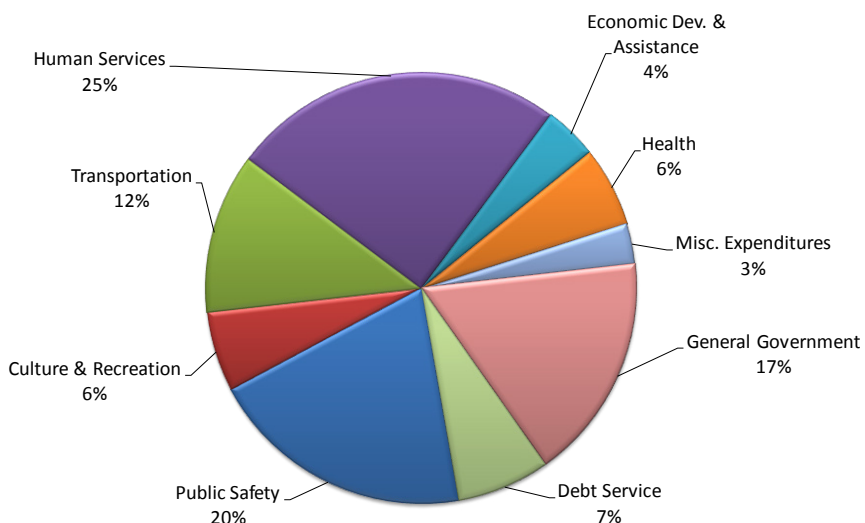
This section presents summarized financial statements for the County. The County uses two formats for presenting its financial statements. Government-wide, which is similar to a private sector business, shows a broad overview of the County's financial standing and reflects a long-term focus. The fund financial statements, on the other hand, provide a look at an individual fund's assets, liabilities, and fund balance and reflects a short-term focus. For more detailed financial statements, please refer to the County's Comprehensive Annual Financial Report (CAFR) found on the County's website at [www.co.ramsey.mn.us/ba/index.htm](http://www.co.ramsey.mn.us/ba/index.htm).

The information presented in these graphs is derived from the fund financial statements.

## *Where the County dollar came from...*

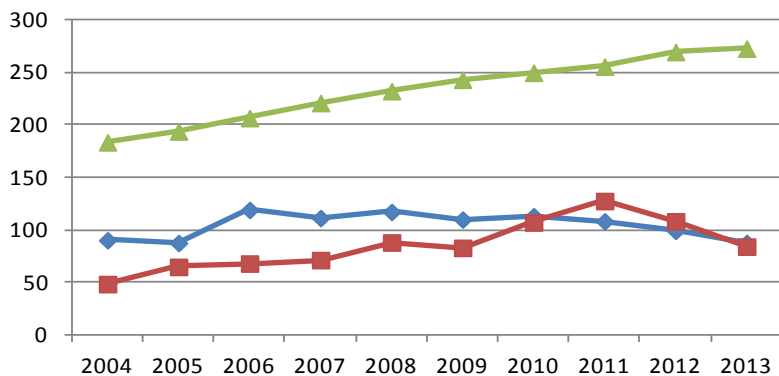


## *Where the County dollar went...*

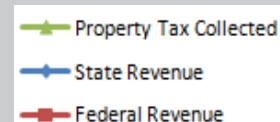


# MULTI YEAR TRENDS

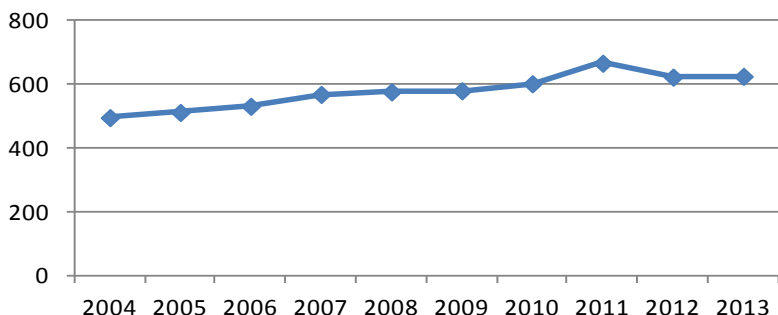
## County Revenue Trends (dollars in millions)



The Ramsey County property tax levy has been trending upward since 2003, primarily as a result of flat or reduced State aid. Property taxes provided 35% of the County's budget in 2003, but increased to 50% in 2013. State aid has failed to keep pace with population growth, increased service demands and inflationary cost pressures. State revenues include County Program Aid, Market Value Homestead Credit Aid, categorical grants and road construction funding.

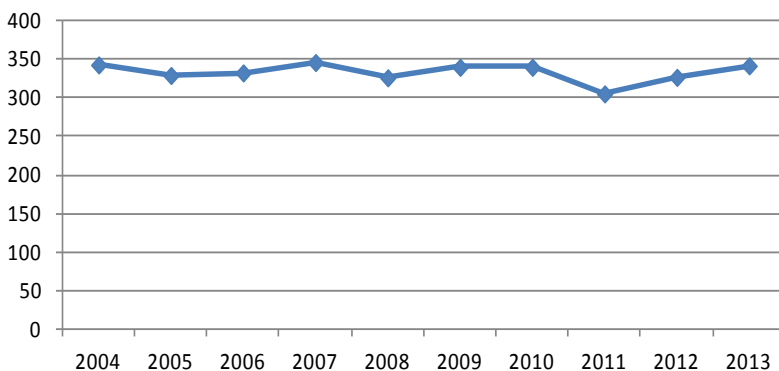


## Total Expenditures in Governmental Funds (dollars in millions)



Total County expenditures have gradually increased at an average annual rate of 2.6% over the past 10 years. Total County expenditures across all governmental funds were \$625,763,189 in 2013.

## Net Bonded Debt Per Capita (in dollars per capita)



Refinancing of existing debt, to take advantage of historically low interest rates, has resulted in manageable debt levels for the County despite an active capital improvement program to replace and rehabilitate aging facilities and public infrastructure. Debt ratios fall within the low to moderate benchmark set by the credit rating agencies for AAA counties.

# GOVERNMENT-WIDE STATEMENTS

The information presented in the following section is derived from the government-wide financial statements.

## STATEMENT OF NET POSITION

	Total				
	2009	2010	2011	2012	2013
<b>Assets</b>					
Total Current & Other Assets	\$503,952,295	\$470,573,223	\$509,394,753	\$521,171,153	<b>\$547,284,700</b>
Total Capital Assets	647,810,114	701,393,946	803,954,046	839,490,104	<b>840,614,525</b>
<b>Total Assets</b>	<b>\$1,151,762,409</b>	<b>\$1,171,967,169</b>	<b>\$1,313,348,799</b>	<b>\$1,360,661,257</b>	<b>\$1,387,899,225</b>
<b>Liabilities</b>					
Total Current Liabilities	\$105,391,097	\$90,014,721	\$159,957,634	\$117,045,398	<b>\$100,048,467</b>
Total Non Current Liabilities	276,154,538	290,774,883	282,484,247	319,181,727	<b>341,878,828</b>
<b>Total Liabilities</b>	<b>\$381,545,635</b>	<b>\$380,789,604</b>	<b>\$442,441,881</b>	<b>\$436,227,125</b>	<b>\$441,927,295</b>
<b>Net Position</b>					
Invested in Capital Assets					
Net Investment in Capital Assets	\$495,279,089	\$507,896,299	\$598,062,359	\$613,754,846	<b>\$669,229,064</b>
Restricted	64,652,023	85,110,684	120,670,636	108,108,169	<b>99,804,214</b>
Unrestricted	210,285,662	198,170,582	152,173,923	202,571,117	<b>176,938,652</b>
<b>Total Net Position</b>	<b>\$770,216,774</b>	<b>\$791,177,565</b>	<b>\$870,906,918</b>	<b>\$924,434,132</b>	<b>\$945,971,930</b>

The Statement of Net Position presents financial information on all of the County's capital and current assets, minus the current liabilities and long-term debt. The resulting amount is stated as "net position." The table above shows that the County has increased its total net position by 22.8% between 2009 and 2013.

Below you will find some highlights and explanations of major changes to our Statement of Net Position from 2009 to 2013.

### Assets and Liabilities:

- Total assets increased 26.1% over the past 5 years, primarily due to the increase in capital assets over this time period.
- Total liabilities increased 15.8% over the 5 year period.

### Net Assets Invested in Capital Assets:

- Capital Assets increased 35.1% over the past 5 years and average a 5% increase annually.
- A major renovation of the Union Depot was the key driver of our increase in Capital Assets.

## STATEMENT OF ACTIVITIES

	2009	2010	2011	Restated 2012	2013
<b>Program Revenues</b>	\$294,939,025	\$326,035,328	\$358,949,036	\$336,454,984	<b>\$313,161,745</b>
<b>General Revenues</b>	295,560,749	300,953,445	302,571,792	318,374,275	<b>313,639,231</b>
<b>Total Revenues</b>	590,499,774	626,988,773	661,520,828	654,829,259	<b>626,800,976</b>
<b>Program Expenses</b>	566,536,332	606,027,982	581,791,475	601,302,045	<b>605,865,602</b>
<b>Increase/(Decrease) in Net Position</b>	23,963,442	20,960,791	79,729,353	53,527,214	<b>20,935,374</b>
<b>Net Position - Beginning</b>	746,253,332	770,216,774	791,177,565	870,906,918	<b>924,434,132</b>
<b>Net Position - End</b>	\$770,216,774	\$791,177,565	\$870,906,918	\$924,434,132	<b>\$945,369,506</b>

The Statement of Activities presents the County's change in net position over a given period. This statement does not take into account the timing of related cash flows. The County's total revenue increased by 6.1% over the five year period between 2009 and 2013. Revenue reductions in 2008 and 2009 were largely the result of cutbacks in State funding and lower earnings on investments due to the economic downturn. To offset these revenue reductions, the County instituted cost-containment measures including service reductions and leaving vacant positions unfilled. These cost-containment measures are reflected in the 1.3% decrease in expenses between 2008 and 2009. Revenue increases in 2012 were largely due to a significant increase in Capital Grants & Contributions to support a variety of construction projects throughout the County.

Program expenses increased by 6.9% from 2009 to 2013, averaging an increase of 1.4% annually. Program expenses differ from the expenditures listed in the governmental funds due to the unique nature of special service funds such as debt service and capital projects being listed in the total governmental fund expenditures and not in the Statement of Activities.

Ramsey County strives to balance our residents' ability to pay with the need for essential services in difficult economic times. Ramsey County has proven to be a financially responsible government, and will continue to provide essential services while maintaining strong financial management.



# CAPITAL ASSETS & DEBT MANAGEMENT

## RAMSEY COUNTY DEBT TREND DATA

	2009	2010	2011	2012	2013
General Obligation Debt	\$193,302,000	\$194,792,000	\$192,770,000	\$210,522,000	\$209,772,000
GO Debt to Market Value	0.36%	0.39%	0.40%	0.54%	0.57%
GO Debt Per Capita	\$356	\$364	\$359	\$412	\$398
Debt Service Tax Levy: County DS	\$16,568,638	\$17,818,638	\$19,068,638	\$20,700,000	\$21,735,000
Library DS	\$1,638,765	\$1,638,854	\$1,638,376	\$2,049,992	\$1,839,014
Debt Service Tax Levy to Total Tax Levy	6.63%	6.93%	7.75%	8.23%	8.52%
Estimated Market Value	\$48.4 B	\$46 B	\$43.2 B	\$39.2 B	\$36.8 B
Annual G.O. Bonding	\$22,050,000	\$16,500,000	\$56,265,000	\$34,840,000	\$34,700,000

## CAPITAL ASSETS (NET OF DEPRECIATION) FIVE YEAR TREND

	2009	2010	2011	2012	2013
Land	\$98,308,534	\$137,475,719	\$141,861,576	\$142,050,118	\$142,545,765
Buildings & Improvements	242,359,932	257,961,015	280,044,643	275,976,887	406,553,224
Improvements Other Than Buildings	17,603,520	17,191,520	16,496,877	16,921,127	22,702,844
Equipment	27,076,007	25,933,752	26,651,694	25,508,525	23,179,260
Computer Software	760,181	692,947	122,232	-	-
Infrastructure	192,191,207	213,005,364	209,481,328	206,459,365	210,641,734
Construction in Progress	69,510,733	49,133,629	129,295,696	172,574,082	45,676,543
Total	\$647,810,114	\$701,393,946	\$803,954,046	\$839,490,104	\$851,299,370



Ramsey County parks offer individual tables, picnic shelters, and pavilions such as this one in Turtle Lake County Park.



In 2013 The County completed an extensive renovation of historic Keller Golf Course, including the construction of a new clubhouse and pro shop buildings.

## CONNECT WITH US

### Stay Informed on line at [www.co.ramsey.mn.us](http://www.co.ramsey.mn.us)

Access Ramsey County news, programs and services and sign up to receive electronic notifications.  
Or call one of the numbers listed below for more information:

General Information	651-266-8500
Board of Commissioners	651-266-8350
County Administration	651-266-8000
County Extension Service	651-704-2080
Courts	651-266-8266
Emergencies	911
Human Services	651-266-4444
Jury Information	651-266-8200
Licenses & Records	651-266-8265
Parks and Recreation	651-748-2500
Property Records and Revenue	651-266-2000
Public Health	651-266-2400
Recycling/Yard Waste	651-653-3279
Road Work/Snow Plows	651-266-7100
Traffic Violations	651-266-8105
Voter Registration	651-266-2171



#### **Conservation District**

<https://twitter.com/RamseySWCD>

#### **Emergency Management/Homeland Security**

<https://twitter.com/RamseyCoEMHS>

#### **Libraries**

<https://twitter.com/rcIreads>

#### **Law Library**

<https://twitter.com/RCLawLibrary>

#### **Public Health**

<https://twitter.com/HealthyRamsey>

#### **Public Health**

<https://twitter.com/GreenRamsey>

#### **Sheriff**

<https://twitter.com/RamseySheriff>

#### **Extension Services**

<https://twitter.com/UMNExt>

#### **Union Depot**

<https://twitter.com/uniondepot>



#### **Ramsey Conservation District**

**Ramsey County Emergency Management  
and Homeland Security**

**Ramsey County Library**

**Ramsey County Parks and Recreation**

**HealthyRamsey - Saint Paul - Ramsey**

**County Public Health**

**Green Ramsey**

**Ramsey County Sheriff's Office**

**Ramsey County Veterans Services**

**University of Minnesota Extension**

**Gibbs Museum of Pioneer & Dakotah Life**

**Ramsey County Master Gardener**

**Volunteers, from University of**

**MN Extension**

**Union Depot**



